

» FREE SUBURB
PROFILE REPORT

21/02/2012

Burpengary QLD 4505

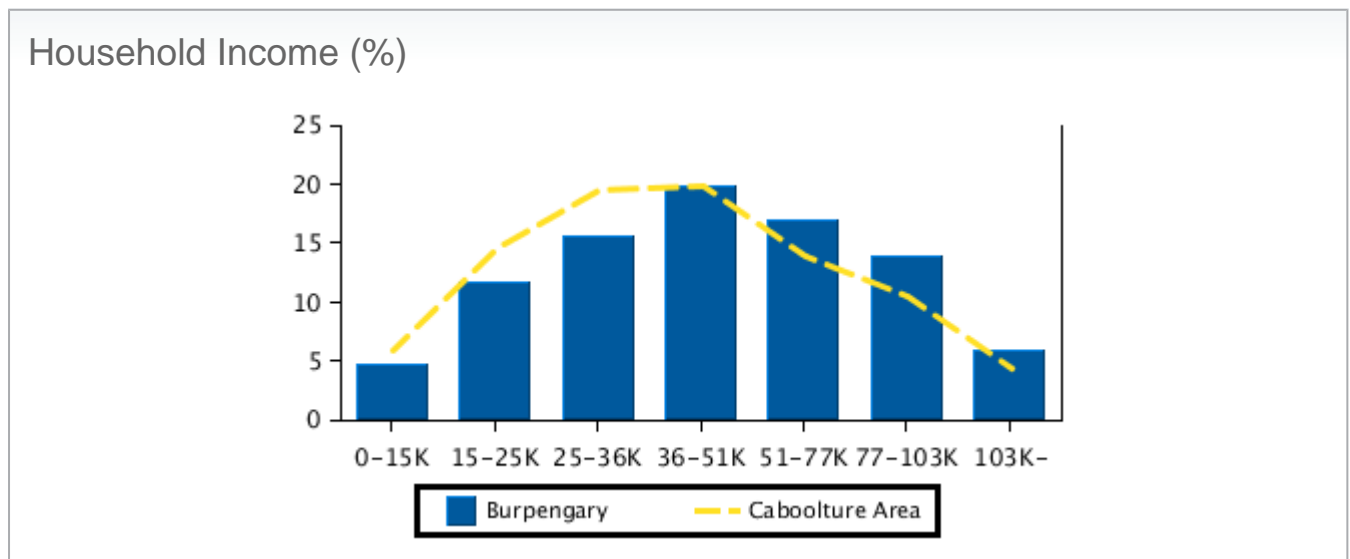
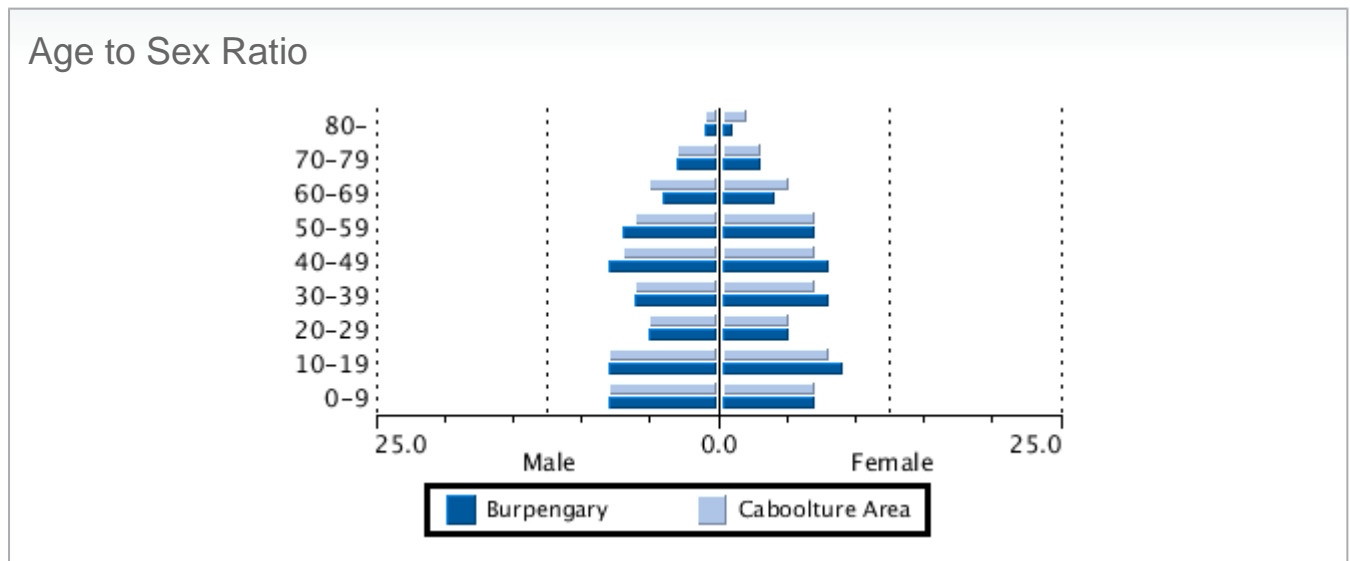
>> AREA PROFILE

The size of Burpengary is approximately 46 square kilometres. It has 21 parks covering nearly 4% of total area. The population of Burpengary in 2001 was 15,120 people. By 2006 the population was 17,530 showing a population growth of 15% in the area during that time. The predominant age group in Burpengary is 10-19 years.

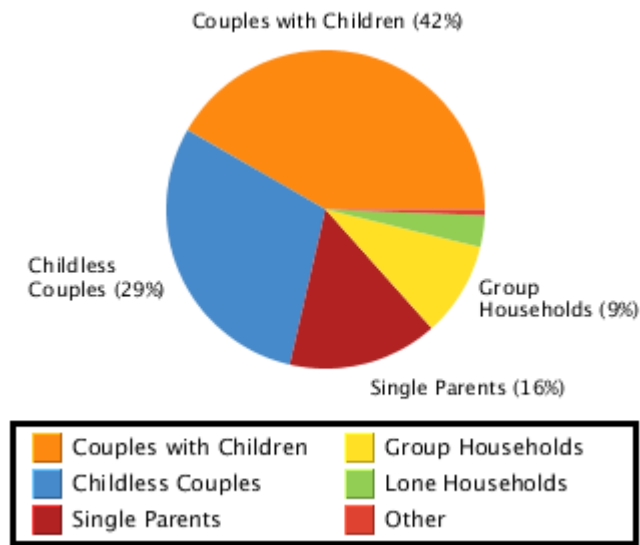
Households in Burpengary are primarily couples with children and are likely to be repaying between \$800 - \$1000 per month on mortgage repayments. In general, people in Burpengary work in a non-specific occupation. In 2001, 80.0% of the homes in Burpengary were owner-occupied compared with 82.5% in 2006.

Currently the median sales price of houses in the area is 345,000.

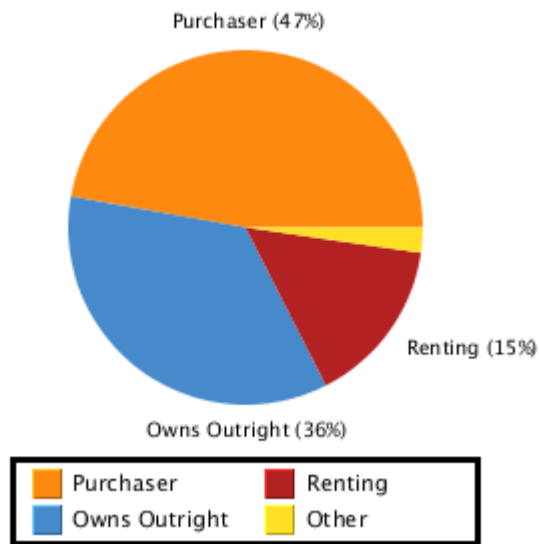
>> AREA STATISTICS



Household Structure

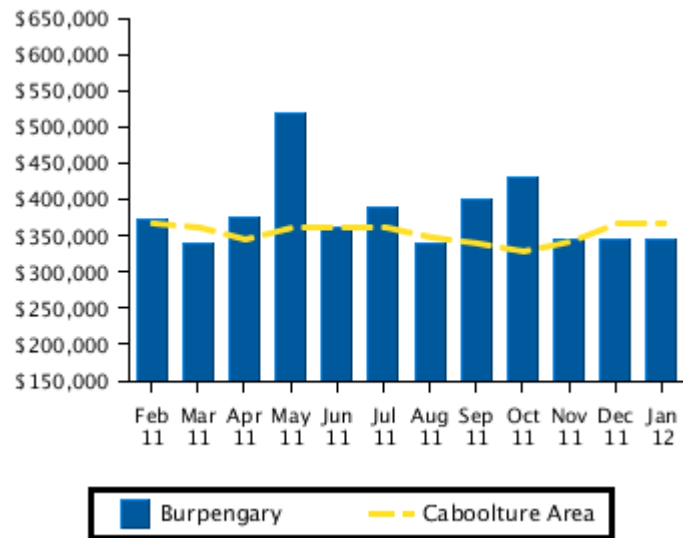


Household Occupancy

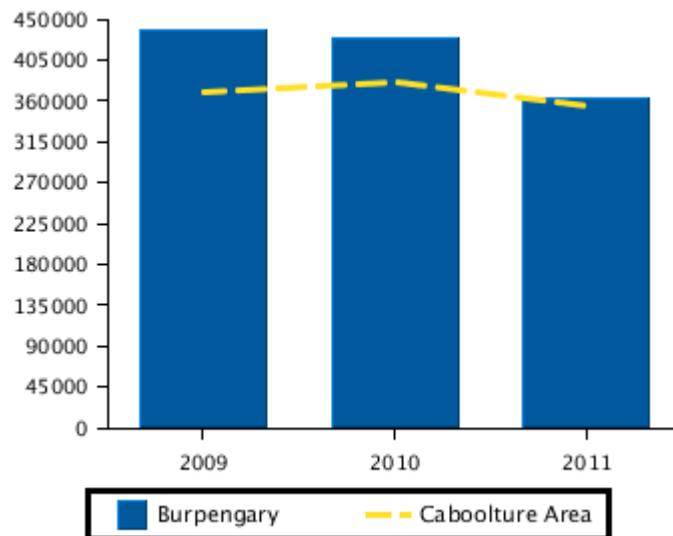


>> HOUSE STATISTICS

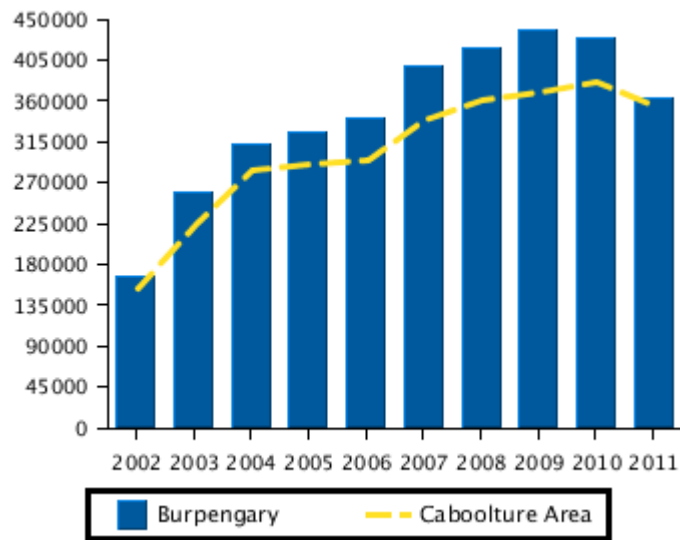
Median Prices (12 Months)



Median Prices (3 Years)

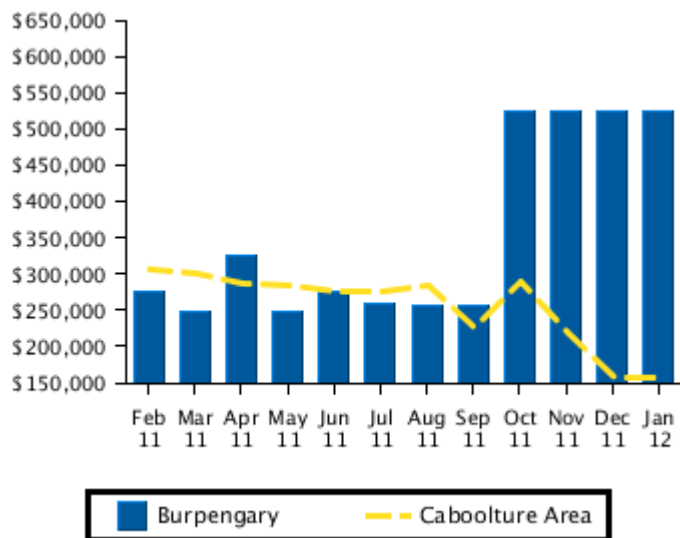


Median Prices (10 Years)

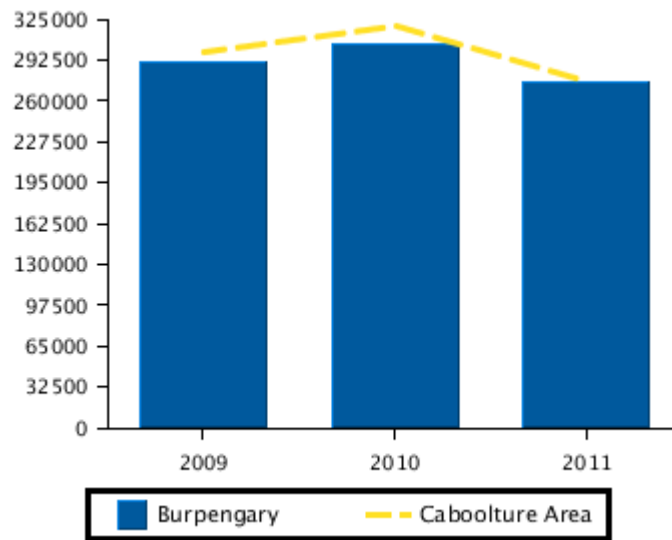


>> UNIT STATISTICS

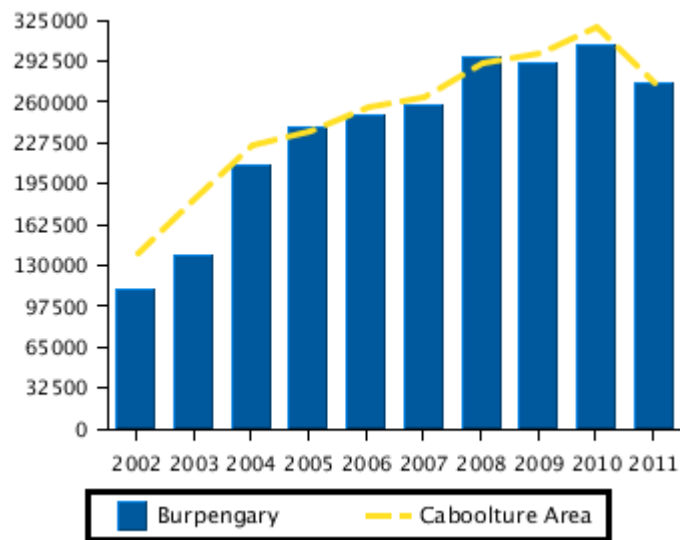
Median Prices (12 Months)



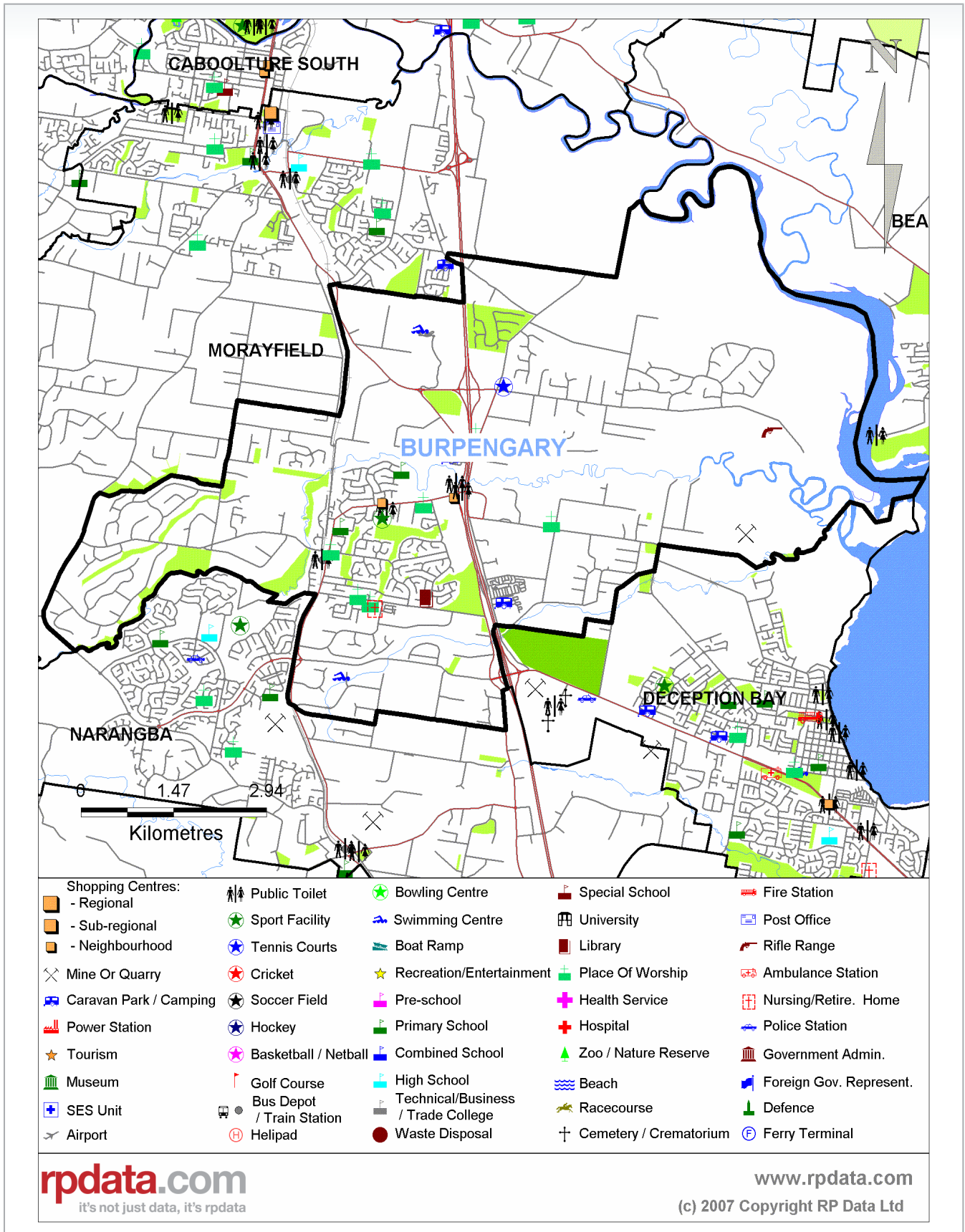
Median Prices (3 Years)



Median Prices (10 Years)



» AREA MAP



Thank you for your interest in the Free Suburb Profile Report from RP Data Pty Ltd. We hope the report has been helpful to you.

Contact RP Data Pty Ltd:

If you have any questions about myrp.com.au, RP Data's Property Reports or RP Data Ltd's other services please contact RP Data Ltd by phone or email.

Within Australia	1300 789 449
Outside Australia	(+61) 73114 9999

Email us: support@myrp.com.au

DISCLAIMERS

© 2012 Copyright RP Data Pty Ltd, Local, State, Commonwealth Governments. All rights reserved. No reproduction, distribution, or transmission of the copyrighted materials at this site is permitted whether in whole or in part.

In compiling this publication, RP Data has relied upon information supplied by a number of external sources. The publication is supplied on the basis that while the RP Data believes all the information in it is deemed reliable at the time of publication, it does not warrant its accuracy or completeness and to the full extent allowed by law excludes liability in contract, tort or otherwise, for any loss or damage sustained by subscribers, or by any other person or body corporate arising from or in connection with the supply or use of the whole or any part of the information in this publication through any cause whatsoever and limits any liability it may have to the amount paid to RP Data for the supply of such information.

© The State of Queensland (Department of Natural Resources and Mines) 2012. Based on data provided with the permission of the Department of Natural Resources and Mines: [QVAS 2012]. The Department of Natural Resources and Mines makes no representations or warranties about accuracy, reliability, completeness or suitability of the data for any particular purpose and disclaims all responsibility and all liability (including without limitation, liability in negligence) for all expenses, losses and damages (including indirect or consequential damage) and costs which might be incurred as a result of the data being inaccurate or incomplete in any way and for any reason.